



**"Million Mile Warranty"**

YOU BREAK IT... WE REPLACE IT, FOR FREE, FOR LIFE !



**3I SERIES**

**MIL-STANDARD  
UTILITY CASE**

3I-2011-7B-C



3I-1813-5B-D

3I-1610-5B-C



3I-1209-4B-E



**MIL-STANDARD, SUBMERSIBLE,  
MULTI-FUNCTIONAL EQUIPMENT  
TRANSPORT SERIES**

**FEATURES INCLUDE :**

- ultra high-strength polypropylene copolymer resin
- gasketed, water and dust-tight submersible design (MIL-C-4150J)
- resistant to UV, solvents, corrosion, fungus and impact damage (MIL-STD-810F)
- continuous molded-in hinge with stainless steel pin
- patent pending "trigger release" latch system
- comfortable, snap-down, rubber over-molded handle
- automatic ambient pressure equalization valve (MIL-STD-648C and IP67)
- cases stack securely and accommodate padlocks

**SUGGESTED APPLICATIONS**

- camera, video and portable GPS gear
- music recording and playback equipment
- satellite phones and radios
- police and military gear
- boat gear, fishing reels
- fire, rescue and first aid equipment
- portable electronics



3I-2015-10B

Part #	Inside L X W X H	LID depth	BASE depth	pull-handle wheels
3I-0907-4B*	9 1/4" x 7 1/8" x 4 1/8"	1 3/16"	2 15/16"	
3I-0907-6B*	9 7/8" x 7" x 6 1/8"	1 3/16"	4 15/16"	
3I-1209-4B*	12" x 9" x 4 1/2"	1 1/2"	3"	
3I-1610-5B	16" x 10" x 5 1/2"	2"	3 1/2"	
3I-1611-6B	16 7/8" x 11 3/16" x 6"	1 3/4"	4 1/4"	
3I-1813-5B*	18 1/2" x 13" x 4 3/4"	1 1/2"	3 1/4"	
3I-1813-5B-N**	18 1/2" x 13" x 4 3/4"	1 1/2"	3 1/4"	
3I-1813-7B*	18 1/2" x 13" x 7"	1 1/2"	5 1/2"	
3I-1914-8B*	19" x 14 1/4" x 8"	2"	6"	X
3I-1914-8BT**	19" x 14 1/4" x 8"	2"	6"	X
3I-2011-7B	20 1/2" x 11 1/2" x 7 1/2"	2"	5 1/2"	X
3I-2011-8B*	20 1/2" x 11 1/2" x 8"	2"	6"	
3I-2015-7B	20 1/2" x 15 1/2" x 7 1/2"	2"	5 1/2"	
3I-2015-10B	20 1/2" x 15 1/2" x 10"	2"	8"	X

\* BUILT IN TSA TRIGGER LATCHES STANDARD

\*\* ACCEPTS TSA TRIGGER LATCHES AVAILABLE SEPARATELY

**Product Code Breakdown**

**INTERIORS**  
**E - Empty**  
**C - Cubed Foam**  
**L - Layered Foam**  
**D - Padded Dividers**  
**N - Laptop Interior**

3I-2011 - 7B-C

INJECTION SERIES

INT. Length / Width

INT. Total Depth

COLOR (black)

INTERIOR (cubed foam)



www.skbcases.com

**MUSIC PRODUCTS 800.410.2024**  
**SPORTS PRODUCTS 800.654.5992**  
**INDUSTRIAL PRODUCTS 800.783.0087**



# 3R SERIES



## "Million Mile Warranty"

YOU BREAK IT... WE REPLACE IT, FOR FREE, FOR LIFE!

MIL-STANDARD  
UTILITY CASE



SEE REFERENCE  
CHART FOR MODELS  
WITH AVAILABLE  
'SLIDE-MOUNT'  
CASTER KITS

3R2222-20B



### FEATURES INCLUDE :

- Superior rotationally molded strength and ergonomic design.
- Impenetrable, yet lightweight LLDPE shell for maximum impact resistance.
- UV, solvent, corrosion and fungus resistant (MIL-STD-810F).
- Complete gasket seal makes these cases absolutely watertight (MIL-C-4150J).
- Automatic ambient pressure equalization valve (MIL-STD-648C & IP67).
- Black powder coated stainless steel hardware prevents rusting.
- Comfortable, spring-loaded, rubber over-molded handles.
- These cases are designed and built to withstand levels of punishment in excess of all ATA and most industrial and military shipping specifications.

3R4417-8B

3R2222-12B-C



versatile cubed foam interior

SEE REFERENCE  
CHART FOR MODEL  
NUMBERS EQUIPPED  
WITH PULL-HANDLES  
AND WHEELS

CASES DESCRIBED ARE  
IN-STOCK ITEMS, FOR  
CUSTOM APPLICATIONS,  
PLEASE CALL.

Part #	Inside L X W X H	LID depth	BASE depth	CASTERS AND FOAM INSERT OPTIONS				
				handle and wheels	caster kit*	padded dividers	cubed foam	layered foam
3R1919-14B	19" x 19" x 14-1/2"	3"	11 3/8"	X			X	
3R2216-15B-E	22" x 16" x 15"	3"	12"					
3R2217-10B	22" x 17" x 10-1/2"	3"	7-1/2"	X		X	X	
3R2222-12B	22" x 22" x 12"	3"	9"	X		X	X	
3R2222-20B	22" x 22" x 20"	3-1/2"	16-1/2"		X		X	
3R2423-17B	24" x 23" x 17"	3-1/2"	13-1/2"	X			X	
3R2424-24B	24" x 24" x 24"	3-1/2"	20-1/2"		X			X
3R2727-18B	27" x 27" x 18"	3-1/2"	14-1/2"		X			X
3R2727-27B	27" x 27" x 27"	3-1/2"	23-1/2"		X			X
3R2817-10B***	28-3/4" x 17-1/2" x 10-5/8"	2"	8-5/8"	X			X	
3R3025-15B	30" x 25" x 15"	3-1/2"	11-1/2"	X			X	
3R3214-15B	32" x 14-1/2" x 15-3/4"	3-1/4"	12-1/2"	X			X	
3R4024-18B	40" x 24" x 18"	3-1/2"	14-1/2"		X			X
3R4024-24B	40" x 24" x 24"	3-1/2"	20-1/2"		X			X
3R4417-8B-EW**	44-1/4" x 17-1/2" x 8"	3-1/8"	4-7/8"	X				
3R4530-24B-E	45" x 30" x 24"	3-1/2"	20-1/2"		X			
3R4909-5B-E**	49-1/2" x 9" x 5-1/2"	2-1/4"	3-1/4"					
3R5030-24B-E	50" x 30" x 24"	3-1/2"	20-1/2"		X			
3R5212-7B-EW**	52-1/2" x 12-1/8" x 8"	3-1/8"	4-7/8"	X				

\* 35KB-CAST1 CASTER PLATE & WHEEL KIT AVAILABLE SEPARATELY.  
 \*\* BUILT-IN TSA TRIGGER LATCHES STANDARD; ALSO OFFERED AS 2R SERIES CASES IN BLACK, OLIVE DRAB OR TAN WITH CONVOLUTED FOAM INSERTS.  
 \*\*\* BUILT-IN TSA TRIGGER LATCHES STANDARD

3R 2217-10B

- ROTO SERIES
- INT. Length / Width
- INT. Total Depth
- COLOR (black)



www.skbcases.com

MUSIC PRODUCTS 800.410.2024  
SPORTS PRODUCTS 800.654.5992  
INDUSTRIAL PRODUCTS 800.783.0087



## "Million Mile Warranty"

YOU BREAK IT. . WE REPLACE IT, FOR FREE, FOR LIFE !



# MP SERIES

## MILITARY STYLE SHIPPING CONTAINERS

All case hardware is protected by corner bumpers, designed for impact defense.



Spring-loaded side handles with 90° stops for efficient transport.



Heavy-duty twist latch system and padlock loops mounted to military tough "L" valance, designed for precise and reliable closure.



### FEATURES INCLUDE :

- gasketed, heavy-duty "L" valance insures secure closure
- resistant to UV, solvents, corrosion, fungus and impact damage.
- molded-in protective bumpers
- heavy-duty twist latch system
- comfortable, spring loaded side handles
- cases stack securely and accommodate padlocks

Custom Colors available on special order

## MAXIMUM PROTECTION CASES Military-style shipping containers.

AVAILABLE IN SEVEN SIZES

Dimensions	l x w x h	Lid	Base
3SKB-1212M	12" x 12" x 8"	3-3/4"	4-1/4"
3SKB-1616M	16" x 16" x 13"	5"	8"
3SKB-1814M	18" x 14-7/8" x 9-1/2"	4-1/2"	5"
3SKB-2218M	22" x 18" x 9-5/8"	5"	4-5/8"
3SKB-2421M	24" x 21" x 9"	4"	5"
3SKB-2825M	27-3/4" x 25-3/4" x 18"	9"	9"
3SKB-3018M	30-1/4" x 19-1/4" x 17-1/2"	8"	9-1/2"



www.skbcases.com

MUSIC PRODUCTS 800.410.2024  
SPORTS PRODUCTS 800.654.5992  
INDUSTRIAL PRODUCTS 800.783.0087



# "Million Mile Warranty"

YOU BREAK IT... WE REPLACE IT, FOR FREE, FOR LIFE !



# MR SERIES

## TRANSPORT CONTAINERS WITH RETRACTABLE HANDLES AND WHEELS



Durable quiet-glide wheel system.



Heavy-duty pull handle system.



Molded-in bumper systems are designed to protect hardware



metal, telescoping style handle pictured here is used on these case sizes.

### FEATURES INCLUDE :

- Case shells are molded of durable, impact resistant high density polyethylene.
- Convenient retractable pull-handle.
- Quiet, durable roller-blade style wheels.
- Molded-in protective bumpers protect hardware.
- Heavy-duty latch system
- Comfortable, spring loaded side handles.

Now available in 14 stock sizes.

	Dimensions	l x w x h	Lid	Base
3SKB-1413MR	14-1/2" X 13-1/8" X 7-5/8"		2-1/8"	5-1/2"
3SKB-1812MR	18-3/8" X 12-1/8" X 7-3/4"		2-5/8"	5-1/8"
3SKB-1818MR	18" X 18" X 13"		5"	8"
3SKB-1913MR	19" X 13-3/8" X 8-5/8"		3-1/4"	5-3/8"
3SKB-1914MR	19-3/8" X 14" X 10"		4"	6"
3SKB-1916MR	19" X 16" X 10"		4"	6"
3SKB-2114MR	21-3/8" X 14-1/4" X 8-7/8"		3-1/2"	5-3/8"
3SKB-2218PR	22" X 18" X 8"		3-1/2"	4-1/2"
3SKB-2417MR	24" X 17" X 14-1/2"		5-1/4"	9-1/4"
3SKB-2523MR	25" X 23" X 14"		6"	8"
3SKB-2921MR	29" X 21-1/2" X 17"		8"	9"
3SKB-3025MR	30" X 25" X 15"		7-1/2"	7-1/2"
3SKB-3426MR	34" X 26" X 18-3/4"		7-3/4"	11"
3SKB-3621MR	36-1/2" X 21-1/2" X 18-1/4"		7-1/4"	11"



www.skbcases.com

MUSIC PRODUCTS 800.410.2024  
SPORTS PRODUCTS 800.654.5992  
INDUSTRIAL PRODUCTS 800.783.0087



## "Million Mile Warranty"

YOU BREAK IT. . . WE REPLACE IT, FOR FREE, FOR LIFE !

This SKB line of heavy-duty parallel rib cases offers sleek, contemporary styling, consistently fine craftsmanship and unequalled durability. Ultra High Molecular Weight Polyethylene, resistant to oils, fuels, solvents and acids can withstand temperatures from -80 F to 185F and provides maximum impact strength.



SKB can modify any standard case for a specific product or purpose. Custom colors, molded-in logos, custom inserts, custom hardware, locks, valances and more.

Call our experienced customer service representatives with any questions.

NOTES: All measurements reflect interior dimensions. Dimensional tolerance on "LS Series" cases is .25"



# LS SERIES

## LUGGAGE-STYLE CARRYING CASES WITH HORIZONTAL RIB DESIGN

case number	dimensions l x w	lid depth	base depth
<b>IN-STOCK SIZES - AVAILABLE FOR EXPEDIENT DELIVERY</b>			
9P1108-01	11-1/4" x 8-3/8"	2"	3"
9P1410-01	14-3/8" x 10-3/8"	2-1/2"	3-1/2"
9P1410-02	14-3/8" x 10-3/8"	3"	9"
9P1712-01	17-3/8" x 12-3/8"	2"	2-1/2"
9P1712-02	17-3/8" x 12-3/8"	2 1/2"	3-1/2"
9P1912-01	19" x 12-3/8"	2-1/2"	3"
9P2012-01	20-3/8" x 12-3/8"	2-3/4"	3-3/4"
9P2014-01	20-3/8" x 14"	3"	4"
9P2016-01	20-3/8" x 16-3/8"	3"	4-1/2"
9P2218-01	22" x 18"	3-1/2"	4-1/2"
9P2517-01	25-3/8" x 17-3/8"	4-1/4"	4-3/4"
9P2520-01	25-5/8" x 20-3/4"	4-1/4"	4-3/4"

### CUSTOM SIZES - MINIMUM QUANTITIES APPLY - CALL FOR QUOTE

1108P	11-1/4" x 8-3/8"	4-1/2"	2"
1108N	11-1/2" x 8-1/2"	6-1/4"	2"
1209N	12" x 9"	4-1/4"	2"
1212N	11-7/8" x 11-7/8"	4-1/2"	2"
1307N	13-1/4" x 7-1/4"	3"	2"
1308N	13-3/8" x 8-1/8"	6"	2"
1309N	13-3/8" x 9-7/8"	7"	2"
1409N	14-1/2" x 9"	4-1/4"	2"
1410P	14-3/8" x 10-3/8"	9-1/2"	2"
1413N	14" x 13-3/8"	6"	2"
1511N	14-5/8" x 10-5/8"	1-12"	1-1/2"
1610N	16-1/4" x 10"	3"	1-1/2"
1611P	16-1/4" x 11"	4-1/2"	2"
1611N	16-1/4" x 11-3/8"	3"	1-1/2"
1613P	16-5/8" x 13-3/8"	4-1/2"	2"
1712P	17-3/8" x 12-3/8"	4-1/2"	2"
1809N	18" x 9"	6"	2"
1909N	19-1/8" x 9-1/8"	6"	2"
1912P	19" x 12-3/8"	4-1/2"	2"
1913N	19-1/4" x 13-7/8"	5"	2"
1914P	19-3/8" x 13-3/4"	6"	2"
1915N	19-3/8" x 15"	7"	2"
2010N	20-1/2" x 10"	11"	2"
2011P	20-3/4" x 11-1/2"	4-1/2"	2"
2011N	20-5/8" x 11-5/8"	5"	2"
2012P	20-3/8" x 12-3/8"	4-1/2"	2"
2013N	20-1/4" x 13-3/4"	3-1/2"	2"
2014P	20-3/8" x 14"	4-1/2"	2"
2016P	20-3/8" x 16-3/8"	4-1/2"	2"
2115P	21-1/2" x 15-3/8"	4-1/2"	2"
2214N	22-1/4" x 14"	3-1/2"	2"
2218P	22" x 18"	4-1/2"	2"
2314P	23-1/2" x 14-3/4"	5"	2"
2407N	23-3/4" x 7"	6"	2"
2419N	24-1/4" x 19-1/4"	3-1/2"	1-1/2"
2516P	25" x 16-1/2"	5-1/2"	2"
2517P	25-3/8" x 17-3/8"	4-3/4"	2"
2520P	25-5/8" x 20-3/4"	4-3/4"	2"
2714N	27" x 14"	2-1/2"	2"
2717N	27-3/4" x 17-1/4"	9-1/2"	2"
2906N	29-3/4" x 6-3/4"	4-1/2"	2"
2912N	28-3/4" x 11-3/4"	4-1/2"	2"
3121N	31-1/4" x 21-1/2"	7-1/2"	2"
3515S	35-1/8" x 15-1/4"	5-1/4"	2"
3618P	36-1/2" x 18-1/2"	7-1/2"	2"
3725N	37" x 25"	9-1/4"	2"
4209N	42-3/8" x 9-1/4"	5"	2"
5017P	50-3/8" x 17-3/8"	7-1/2"	2"
7210S	72-3/8" x 10"	3"	2"
7219S	72-3/8" x 19-1/4"	3"	2"



www.skbcases.com

MUSIC PRODUCTS 800.410.2024  
SPORTS PRODUCTS 800.654.5992  
INDUSTRIAL PRODUCTS 800.783.0087



# 20" SHOCKS



## "Million Mile Warranty"

YOU BREAK IT. . . WE REPLACE IT, FOR FREE, FOR LIFE !

## 20" RACK CASES WITH ELASTOMER SHOCKS



SKB's new Roto Shock Racks feature a (20" deep) roto molded tough shell with an integrally molded valance that eliminates the need for a metal valance on the outside of the case.

### FEATURES INCLUDE :

- Standard 19" rack width per EIA standards.
- Redesigned frame with threaded steel rails and aluminum cross components forming an "H" shaped rigid configuration.
- Standard rack depth front to rear rail is 20".
- Front and rear doors are fitted with rubber gaskets for water resistant protection.
- Recessed heavy-duty spring loaded twist latches allow these cases to meet most ATA and military specifications.

*Molded-in handles and secure stackability.*

### AVAILABLE SIZES :

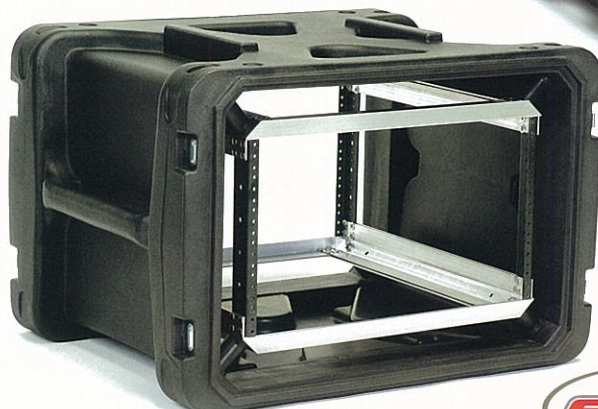
All Standard depths - front to rear rail: 20"

Part #	Lid Depth	Rack Units	Height
1SKB-R904U20	2-1/4"	4 space	7" High
1SKB-R906U20	2-1/4"	6 space	10-1/2" High
1SKB-R908U20	3-1/4"	8 space	14" High
1SKB-R910U20	3-1/4"	10 space	17-1/2" High
1SKB-R912U20	3-1/4"	12 space	21" High
1SKB-R914U20	3-1/4"	14 space	24-1/2" High
1SKB-R916U20	3-1/4"	16 space	28" High
1SKB-1916		Caster Cart	

- Come standard with 8 each HM-245 elastomeric, high damping, wide temperature range shock mounts with a load range of 40 to 150 lbs.
- Additional or stiffer shock mounts may be ordered from the factory and are easily field-installed (call for details & availability).

NOTE: \*These sizes are not designed to accept additional elastomer shock absorbers.

- Easy-grip molded handles.
- Molded-in lugs allow all sizes within the series as well as the caster cart to stack securely.



www.skbcases.com

MUSIC PRODUCTS 800.410.2024  
SPORTS PRODUCTS 800.654.5992  
INDUSTRIAL PRODUCTS 800.783.0087



# 24" SHOCKS



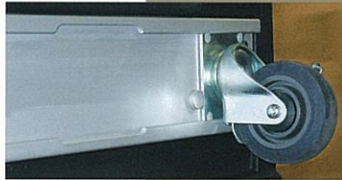
## "Million Mile Warranty"

YOU BREAK IT... WE REPLACE IT, FOR FREE, FOR LIFE!

24" RACK CASES  
WITH  
ELASTOMER  
SHOCKS



Both lids can be completely removed and re-attached simply and quickly.



Slide Mount Casters with 'spring-out' Position Stops Included

3SKB-R916U24



SKB's new Roto Shock Racks feature a (24" deep) roto molded tough shell with an integrally molded valance that eliminates the need for a metal valance on the outside of the case.

### FEATURES INCLUDE :

- Standard 19" rack width per EIA standards.
- Standard rack depth front to rear rail is 24" and each lid is 4.5" deep.
- Redesigned frame with threaded steel rails and aluminum cross components forming an "H" shaped rigid configuration.
- Unique "plug" style lid sealing system. Lids penetrate the body with an approximate 1" molded-in protrusion that provides outstanding sealing and anti-shear properties.
- Patent-pending compound hinge system allows the lids to swing out 270° and rest along the sides of the case or easily removed and reinstalled in seconds.
- Front and rear doors are fitted with rubber gaskets for water resistant protection.
- Recessed heavy-duty twist latches allow these cases to meet most ATA and military specifications.
- Stacks securely with wheels on or off and this revolutionary design also allows for both lids to open completely while cases are stacked.
- All sizes come standard with 8 each HM-245 elastomeric, high damping, wide temperature range shock mounts with a load range of 40 to 150 lbs.
- Additional or stiffer shock mounts may be ordered from the factory and are easily field-installed (call for details & availability).
- Standard high quality slide-in/out locking swivel 4" casters rated at 1,200 lbs.
- Automatic ambient pressure equalization valve (MIL-STD-648C)
- Black powder coated stainless steel key-lockable latches.
- Comfortable, spring-loaded, rubber over-molded handles.

Standard dimensions - front to rear rail: 24"

Part #	Rack Units	Height	Lid Depth
3SKB-R904U24	4 space	7"	4-1/2"
3SKB-R906U24	6 space	10-1/2"	4-1/2"
3SKB-R908U24	8 space	14"	4-1/2"
3SKB-R910U24	10 space	17-1/2"	4-1/2"
3SKB-R912U24	12 space	21"	4-1/2"
3SKB-R914U24	14 space	24-1/2"	4-1/2"
3SKB-R916U24	16 space	28"	4-1/2"

SKB Compound hinge technology allows 270 door swing range even when cases are in a stacked position



3SKB-R916U24



relief valves



elastomers



www.skbcases.com

MUSIC PRODUCTS 800.410.2024  
SPORTS PRODUCTS 800.654.5992  
INDUSTRIAL PRODUCTS 800.783.0087



# 28" SHOCKS



## "Million Mile Warranty"

YOU BREAK IT... WE REPLACE IT, FOR FREE, FOR LIFE!

28" RACK CASES  
WITH  
ELASTOMER  
SHOCKS



Slide Mount Casters with  
'spring-out' Position Stops



3SKB-R908U28

SKB's new Roto Shock Racks feature a 29 1/4" deep design and are equipped with standard square hole rack plates and includes the SKB ARCS System which accepts optional Rail Plate Kits of 10-32 tapped or 5/32" round (0.183") through holes.

### FEATURES INCLUDE :

- Standard 19" rack width per EIA standards.
- Standard rack depth front to rear rail is 29 1/4" and each lid is 4 1/2" deep.
- Standard with square rackmounting holes for cage nuts (not included) and aluminum cross components forming an "H" shaped rigid configuration.
- Easily adaptable to 10-32 tapped or 5/32" round (0.183") through holes.
- Unique "plug" style lid sealing system. Lids penetrate the body with an approximate 1" molded-in protrusion that provides outstanding sealing and anti-shear properties.
- Patent-pending compound hinge system allows the lids to swing out 270° and rest along the sides of the case or be easily removed and reinstalled in seconds.
- Front and rear doors are fitted with rubber gaskets for water resistant protection.
- Recessed heavy-duty twist latches allow these cases to meet most ATA and military specifications.
- Stacks securely with wheels on or off and this revolutionary design also allows for both lids to open completely while cases are stacked.
- All sizes come standard with 8 each HM-245 elastomeric, high damping, wide temperature range shock mounts with a load range of 40 to 150 lbs.
- Additional or stiffer shock mounts may be ordered from the factory and are easily field-installed.
- Standard high quality slide-in/out locking swivel 4" casters rated at 1,200 lbs.
- Automatic ambient pressure equalization valve (MIL-STD-648C).
- Black powder coated stainless steel key-lockable latches.
- Comfortable, spring-loaded, rubber over-molded handles.

Standard dimensions -  
front to rear rail: 29 1/4"

Part #	Rack Units	Height	Lid Depth
3SKB-R904U28	4 space	7"	4-1/2"
3SKB-R906U28	6 space	10-1/2"	4-1/2"
3SKB-R908U28	8 space	14"	4-1/2"
3SKB-R910U28	10 space	17-1/2"	4-1/2"



Patent Pending



29 1/4 inch ARCS equipped Shockrack with front and rear lids opened. Lids are fully removeable.



www.skbcases.com

MUSIC PRODUCTS 800.410.2024  
SPORTS PRODUCTS 800.654.5992  
INDUSTRIAL PRODUCTS 800.783.0087



## "Million Mile Warranty"

YOU BREAK IT... WE REPLACE IT, FOR FREE, FOR LIFE!

30" RACK CASES  
WITH  
ELASTOMER  
SHOCKS



Slide Mount Casters with 'spring-out' Position Stops

Both lids can be completely removed and re-attached simply and quickly.

SKB's new Roto Shock Racks feature a (30" deep) roto molded tough shell with an integrally molded valance that eliminates the need for a metal valance on the outside of the case.

3SKB-R906U30

Standard dimensions - front to rear rail: 30"

### FEATURES INCLUDE :

- Standard 19" rack width per EIA standards.
- Standard rack depth front to rear rail is 30" and each lid is 4.5" deep.
- Redesigned frame with threaded steel rails and aluminum cross components forming an "H" shaped rigid configuration.
- Unique "plug" style lid sealing system. Lids penetrate the body with an approximate 1" molded-in protrusion that provides outstanding sealing and anti-shear properties.
- Patent-pending compound hinge system allows the lids to swing out 270° and rest along the sides of the case or easily removed and reinstalled in seconds.
- Front and rear doors are fitted with rubber gaskets for water resistant protection.
- Recessed heavy-duty twist latches allow these cases to meet most ATA and military specifications.
- Stacks securely with wheels on or off and this revolutionary design also allows for both lids to open completely while cases are stacked.
- All sizes come standard with 8 each HM-245 elastomeric, high damping, wide temperature range shock mounts with a load range of 40 to 150 lbs.
- Additional or stiffer shock mounts may be ordered from the factory and are easily field-installed (call for details & availability).
- Standard high quality slide-in/out locking swivel 4" casters rated at 1,200 lbs.
- Automatic ambient pressure equalization valve (MIL-STD-648C)
- Black powder coated stainless steel key-lockable latches.
- Comfortable, spring-loaded, rubber over-molded handles.

Part #	Rack Units	Height	Lid Depth
3SKB-R904U30	4 space	7"	4-1/2"
3SKB-R906U30	6 space	10-1/2"	4-1/2"
3SKB-R908U30	8 space	14"	4-1/2"
3SKB-R910U30	10 space	17-1/2"	4-1/2"

SKB Compound hinge technology allows 270° door swing range even when cases are in a stacked position.



elastomers



relief valves



www.skbcases.com

MUSIC PRODUCTS 800.410.2024  
SPORTS PRODUCTS 800.654.5992  
INDUSTRIAL PRODUCTS 800.783.0087



# ROLLING SHOCKS



## "Million Mile Warranty"

YOU BREAK IT... WE REPLACE IT, FOR FREE, FOR LIFE!

20" ROLLING RACK CASES  
WITH  
ELASTOMER  
SHOCKS



SKB's new Rolling Roto Shock Racks feature a (20" deep) roto molded tough shell with an integrally molded valance that eliminates the need for a metal valance on the outside of the case.

### FEATURES INCLUDE :

- Standard 19" rack width per EIA standards
- Rack depth front to rear rail is 20" and each lid is 2-1/4" deep
- Threaded steel rails and aluminum cross components forming an "H" shaped rigid configuration
- Recessed TSA trigger release latches allow for opening while stacked
- Secure stacking design allows full use of doors while racks are stacked together
- 8 elastomeric shocks with a load range of from 40 lbs. to 150 lbs.)
- Load range may be increased up to 300 lbs. with optional additional HM-245 elastomeric shocks (see website for details)
- Gasket sealed front and rear doors
- Ambient pressure relief valve
- Sliding retractable handle
- Oversized snap-down handles on each side of the case
- Convenient roller blade wheels
- Cases stocked in Black
- Custom colors available (minimum quantities apply)

Standard dimensions -  
front to rear rail: 20"

Part #	Rack Units	Height	Lid Depth
3SKB-R04U20W	4 space	7"	2-1/4"
3SKB-R06U20W	6 space	10-1/2"	2-1/4"
3SKB-R08U20W	8 space	14"	3-1/4"
* 3SKB-R10U20W	10 space	17-1/2"	3-1/4"
* 3SKB-R12U20W	12 space	21"	3-1/4"

\* - Available Summer 2008



elastomers



relief valves



www.skbcases.com

MUSIC PRODUCTS 800.410.2024  
SPORTS PRODUCTS 800.654.5992  
INDUSTRIAL PRODUCTS 800.783.0087



## "Million Mile Warranty"

YOU BREAK IT... WE REPLACE IT, FOR FREE, FOR LIFE !



# ROTO-X SERIES

SHIPPING CONTAINERS  
available in over  
20 stock sizes



3SKB-CAST  
Removable, lockable  
swivel caster kit

\*\* Caster kit is sold separately for all Roto-X cases with appropriate recesses for mounting except the 3SKB-X4530-24 which includes casters as standard equipment.

\*These Roto-X sizes do not have recesses for wheel attachment. Note: all measurements are interior dimensions. Tolerance ± .25"

## ROTO-X

### FEATURES INCLUDE :

- Rotationally molded for maximum strength and impact resistance.
- Stack securely for efficient transport and storage.
- Spring loaded 90° lifting handles.
- Available heavy-duty removable, lockable swivel caster kits.
- Heavy-duty twist latches will accommodate padlocks.

### SUGGESTED APPLICATIONS :

- Heavy equipment transport.
- Machine parts and military gear.
- Boat gear, fishing equipment.
- Fire, rescue and first aid equipment.

Part number	Description	L x W x H	lid / base
*3SKB-X1814-12	TOOL CASE	18"X14"X12"	3" / 9"
*3SKB-X1818-10	TOOL CASE	18"X18"X10"	5" / 5"
*3SKB-X1818-14	TOOL CASE	18"X18"X14"	4-1/2" / 9-1/2"
*3SKB-X1818-18	SQUARE	18"X18"X18"	4" / 14"
3SKB-X2318-16	FT LOCKER	23"X18"X16"	3" / 13"
3SKB-X2415-10	TOOL CASE	24"X15"X10-1/2"	5-1/4" / 5-1/4"
3SKB-X2424-14	SQUARE	24"X24"X14"	3" / 11"
3SKB-X2424-18	SQUARE	24"X24"X18"	3" / 15"
3SKB-X2424-22	SQUARE	24"X24"X22"	7" / 15"
3SKB-X2513-16	FT LOCKER	25-1/4"X12-3/4"X16"	4" / 12"
3SKB-X2624-32	FT LOCKER	26"X24"X32"	12" / 20"
3SKB-X2719-10	TOOL CASE	27"X19"X10"	5" / 5"
3SKB-X2828-22	SQUARE	28"X28"X22"	8" / 14"
3SKB-X2915-14	FT LOCKER	29"X15"X14"	3" / 11"
3SKB-X3226-30	FT LOCKER	32"X26"X30"	8" / 22"
3SKB-X3426-16	FT LOCKER	34"X26"X16"	3" / 13"
3SKB-X3518-15	FT LOCKER	35"X18"X15"	5" / 10"
3SKB-X3722-21	FT LOCKER	37-1/4"X21-3/4"X21 3/4"	6-1/2" / 15-1/4"
** 3SKB-X4530-24	FT LOCKER	43-1/4"X28-1/4"X21-3/4"	3-1/4" / 18-1/2"
3SKB-X5026-16	FT LOCKER	50"X26"X16"	3" / 13"
3SKB-X5030-24	FT LOCKER	50"X30"X24"	4" / 20"
3SKB-CAST	CASTER KIT	set of 4	



www.skbcases.com

MUSIC PRODUCTS 800.410.2024  
SPORTS PRODUCTS 800.654.5992  
INDUSTRIAL PRODUCTS 800.783.0087



## "Million Mile Warranty"

YOU BREAK IT. . . WE REPLACE IT, FOR FREE, FOR LIFE !

### 19" ULTIMATE STRENGTH STACKING RACKMOUNT SYSTEM



All Standard depths - front to rear rail: 17"  
Each lid is 2" deep

## SKB ROTO MOLDED 19" RACKS

### FEATURES INCLUDE :

- roto molded tuff shell
- recessed heavy-duty twist latches
- molded-in unbendable valance
- solid stackability
- steel threaded front rails are factory installed
- rear rails can be customer installed at any time
- all rails are replaceable - kits sold separately

### SUGGESTED APPLICATIONS :

- rackable mixers and amplifiers
  - recording and playback equipment
  - rackable pullout drawers and shelves
- ref- 1SKB-DRWR-4 and 1SKB-VS1



Easily installed rear rail kits  
are available for all US Racks:  
1SKB-RRK4, RRK6, RRK8, RRK10, RRK12  
1SKB-1904 Caster Kit is also available.

### AVAILABLE SIZES :

Part #	Rack Units	Height
1SKB-R4	4 space	7" High
1SKB-R6	6 space	10-1/2" High
1SKB-R8	8 space	14" High
1SKB-R10	10 space	17-1/2" High
1SKB-R12	12 space	21" High



1SKB-R8 - 8 space rack  
pictured with both front  
and rear lids removed.





**"Million Mile Warranty"**

YOU BREAK IT. . . WE REPLACE IT, FOR FREE, FOR LIFE !



**LCD TRANSPORT**

**ROTO MOLDED LCD SCREEN CASES**



**3SKB-2026**  
20" to 26" Screens  
Includes two over-molded end handles

**3SKB-3237**  
32" to 37" Screens  
Includes one over-molded  
tow handle on each  
end and two  
over-molded lifting  
handles on  
each side



**LCD  
MONITOR  
TRANSPORT  
SOLUTION**



The 3SKB-2026 LCD Screen Case and 3SKB-3237 LCD Screen Case are rotationally molded of LLDPE Polyethylene for strength and durability. The interiors are designed to hold LCD screens in the desirable upright position with a universal interior foam padding system designed to configure easily for customized protection. SKB LCD Screen Cases offers superb quality and construction and are guaranteed for life.

**FEATURES INCLUDE :**

- Holds LCD screens in desirable upright position
- Universal 2" thick foam padding system for easy configuration
- (4) Convuluted foam pieces for side to side protection
- (2) Adjustable convuluted foam pieces for perfect fit top to bottom
- Corner wheels for tilting and easy transport
- Rotationally molded of LLDPE Polyethylene for strength and durability
- Comfortable and durable rubber over-molded handles
- Weather resistant gasketed tongue and groove valance for moisture protection
- Heavy duty twist latches with one padlockable latch on each side
- Can be shipped standard UPS or Fed X



Cases will hold screens with stands for most models on the market.



[www.skbcases.com](http://www.skbcases.com)

**MUSIC PRODUCTS 800.410.2024**  
**SPORTS PRODUCTS 800.654.5992**  
**INDUSTRIAL PRODUCTS 800.783.0087**



**"Million Mile Warranty"**

YOU BREAK IT... WE REPLACE IT, FOR FREE, FOR LIFE !



**SCREEN TRANSPORT**

**3SKB-4250 PLASMA MONITOR CASE**

Pull-out  
caster  
storage  
bin.



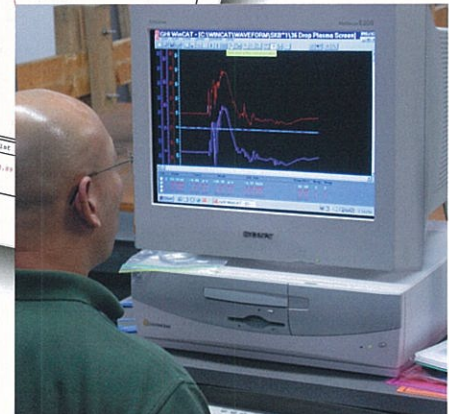
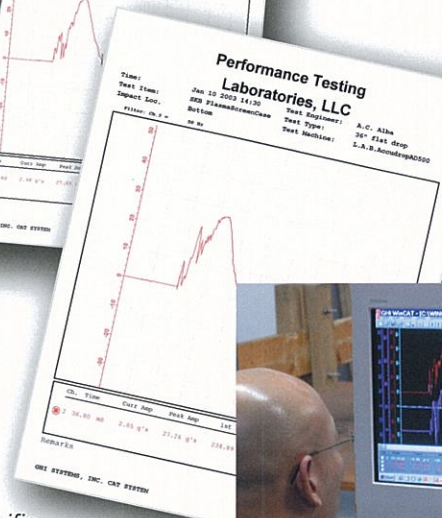
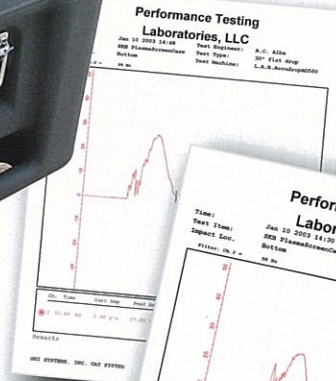
## PLASMA MONITOR TRANSPORT SOLUTION

### FEATURES INCLUDE :

- Fits 42" and 50" plasma screens.
- Rotationally molded for maximum impact resistance.
- Built-in tilt back handles for convenient mobility.
- Spring loaded 90° lifting handles.
- Heavy-duty removable (slide-out) locking swivel casters.
- Pull-out caster storage bin.
- Heavy-duty twist latches.
- Over 20 different inserts available to fit most screens.

### TEST RESULTS :

- Independent laboratory testing has been conducted to ascertain specific data relating to impact resistance. Controlled tests were performed to determine "G" forces applied to screens dropped from various heights. A front face "tip-over" drop (the most likely and potentially catastrophic transport accident) results in a total G-force impact of only 17.17. Detailed test results can be found at [www.skbcases.com](http://www.skbcases.com)



[www.skbcases.com](http://www.skbcases.com)

**MUSIC PRODUCTS 800.410.2024**  
**SPORTS PRODUCTS 800.654.5992**  
**INDUSTRIAL PRODUCTS 800.783.0087**